

HEALTH, SAFETY AND COMPLIANCE SOFTWARE

transforming workplace safety

www.iprotectu.com



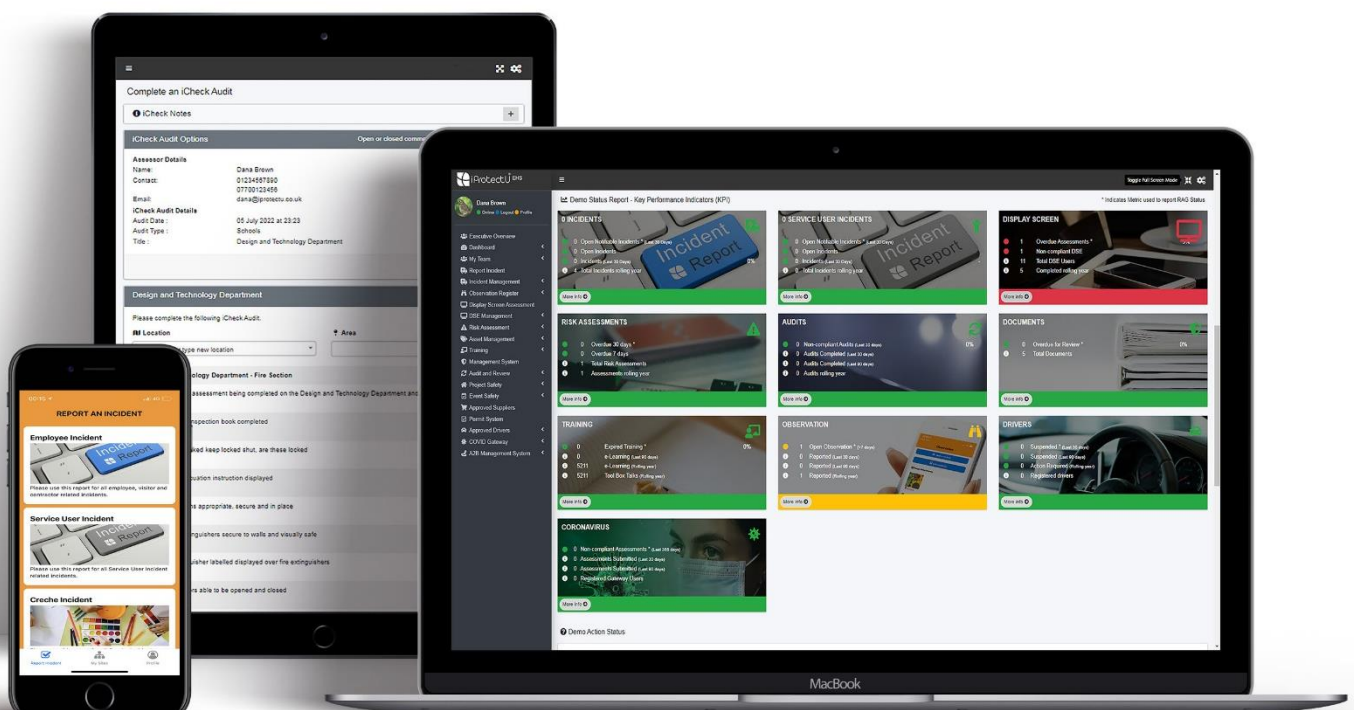
The future of health and safety software today

We provide simple to use, effective and engaging compliance software to clients in the private and public sector.

Trusted by leading UK, European and International brands, universities, manufacturers, hotels, engineering, utilities, services, and every other business sector.

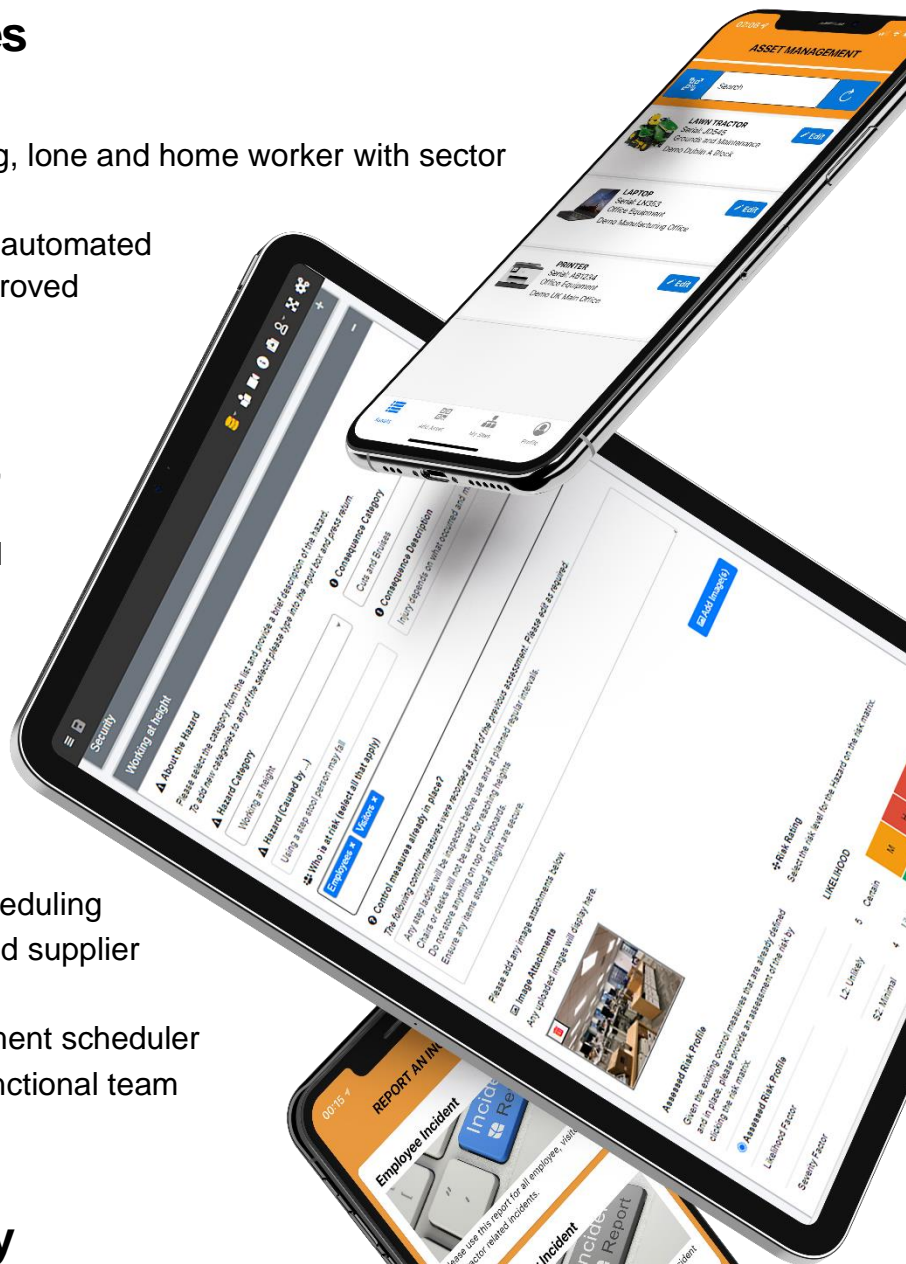
Everything you need to manage safety, environmental, training and legal compliance *in one easy to use package*

iProtectU fully automates safety, health, environmental and compliance performance to international standards. It has a proven track record of success and has enabled numerous organisations to achieve ISO 45001 Safety, ISO 9001 Quality and ISO 14001 Environmental standards. Customisable workflows enable our solutions to meet all sector requirements.



Core Product Capabilities

- ✓ Risk assessment including young, lone and home worker with sector templates
- ✓ Display screen assessment with automated email distribution and IIRSM approved training
- ✓ Chemical assessment
- ✓ Fire risk and asset management
- ✓ Incident reporting for employees, service users and creches
- ✓ International Institute of Risk and Safety Management (IIRSM) approved training
- ✓ Auditing templates and ISO certification system
- ✓ Asset and PPE management with QR code printing and recognition
- ✓ Document management and scheduling
- ✓ Sub-contractor permit to work and supplier compliance portal
- ✓ Training, document and assessment scheduler
- ✓ Dashboards, tasks, team and functional team management and so much more



Security and Technology

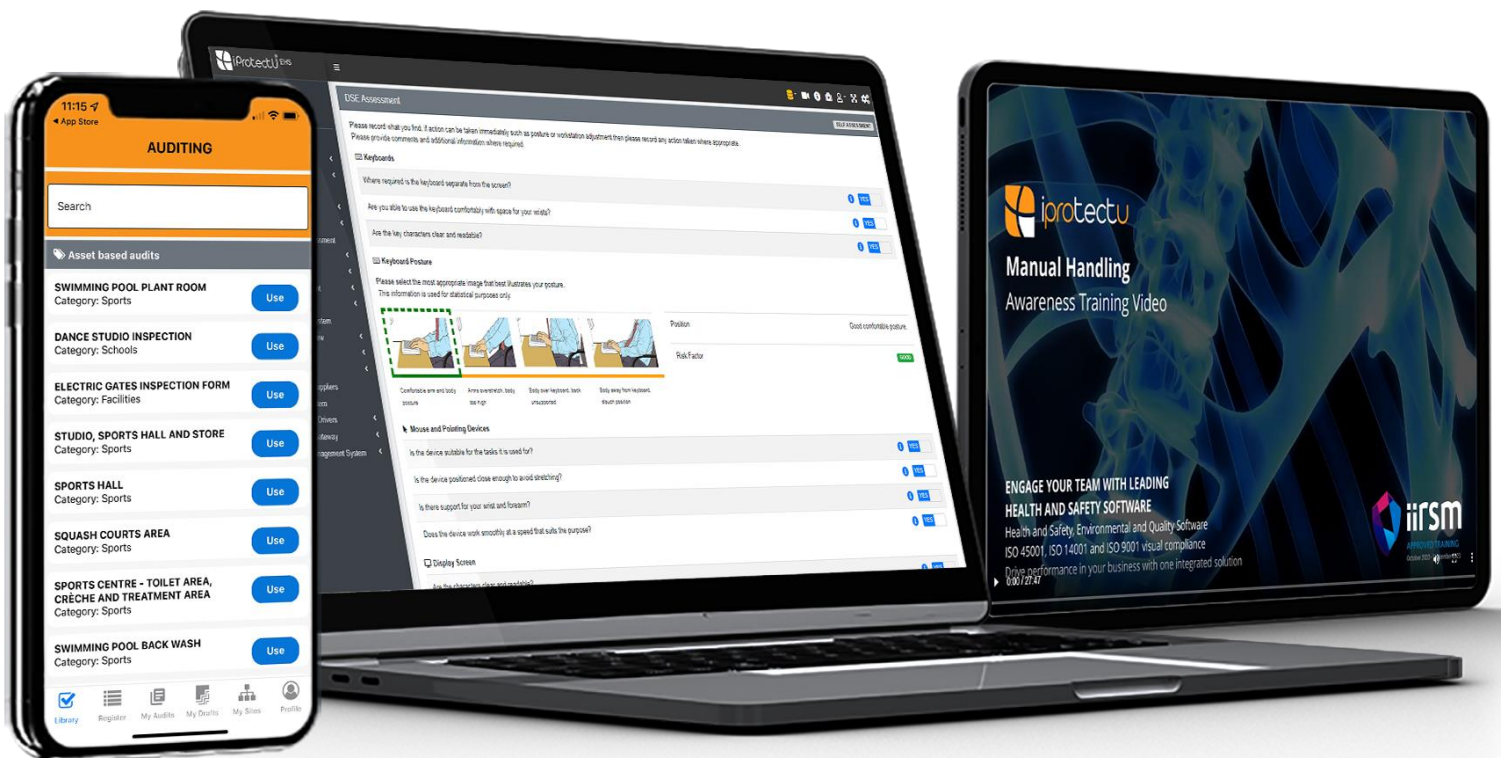
- ✓ System administrator and user configurable privileges
- ✓ Hosted on state-of-the-art scalable Amazon servers
- ✓ End to end encryption with automated backup and restore
- ✓ iProtectU connectivity technology provides enhanced mobile and Wi-Fi support
- ✓ Cloud based and proven on Apple iOS, Android, Windows and Linux



One engaging and simple to use package

As your needs grow so does our software with proven, cost effective, fully configurable and scalable compliance.

Proven employee engagement	Fully integrated and configurable	Data driven decision making
<p>We create beautiful results with minimal effort.</p> <p>We have transformed EHS management for our clients in every sector.</p>	<p>Everything you need with simple configuration and your own branding.</p> <p>Introduce modules when you need them.</p>	<p>Real time data whenever and wherever you need it.</p> <p>Gain insights, knowledge and make informed decisions with ease.</p>



What's included in each of our versions

Core Product Modules	DSE	LITE	LITE+	EHS
Executive Overview	✓	✓	✓	✓
Display Screen Equipment (DSE) Assessment	✓	✓	✓	✓
Training Resources and Records Management	✓	✓	✓	✓
Auditing, Form Creator, Scheduling and ISO Auditing		✓	✓	✓
Incident Reporting and Management		✓	✓	✓
Observation and Hazard Reporting		✓	✓	✓
Risk Assessment Module		✓	✓	✓
Management Documents			✓	✓
Method Statements (Standard Operating Procedure)			✓	✓
First Aid Reporting and Management			✓	✓
Asset Management			✓	✓
Legal Register				✓
Project Safety				✓
Event Safety				✓
Suppliers and Contractors (includes Supplier Portal)				✓
Permits				✓
Approved Drivers				✓
COVID Gateway				✓
A2B Management System				✓

The DSE version of our software provides IIRSM approved Display Screen Equipment (DSE) awareness training, fully automated distribution, scheduling and metrics. Users do not need to login to use our DSE Software which is distributed by email links.

Our Lite and Lite+ versions of our software provide all the features you need to ensure compliance and deliver performance. You will receive the same software; we simply don't include all the modules in this version.

Custom build your own solution and add modules at any time.



To book a demonstration please use the link below:

<https://iprotectu.com>



To request a quotation or for anything else please contact us at:

support@iprotectu.co.uk

+44 (0) 333 242 7447